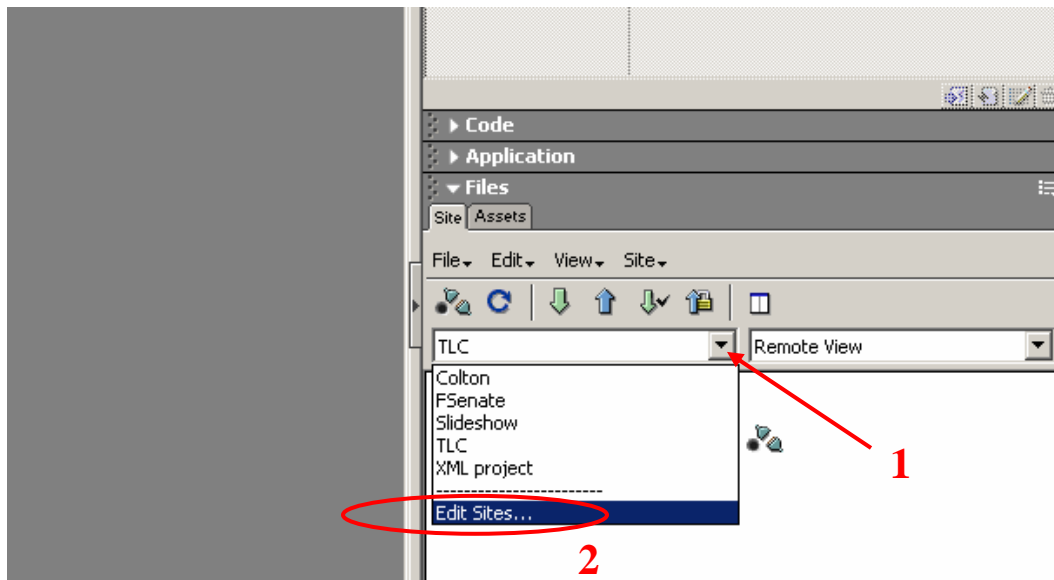


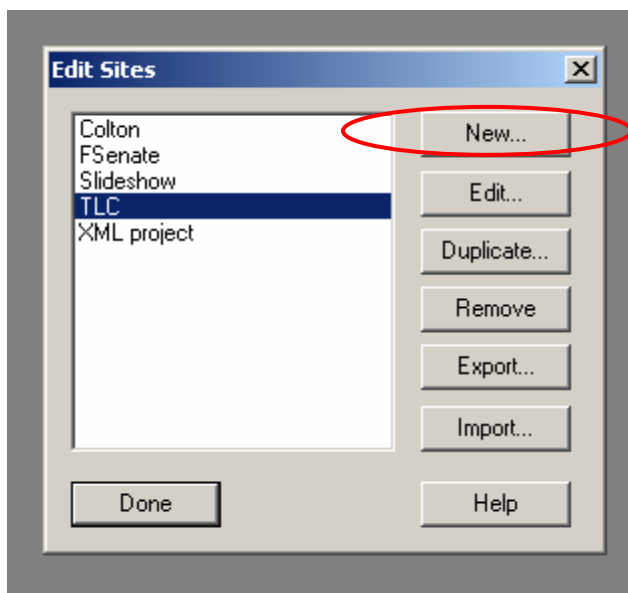
Website- Publishing to Remote Server using Macromedia Dreamweaver

In this tutorial, we will cover how to publish your website from the local copy (on your hard drive) to the remote server using Macromedia Dreamweaver.

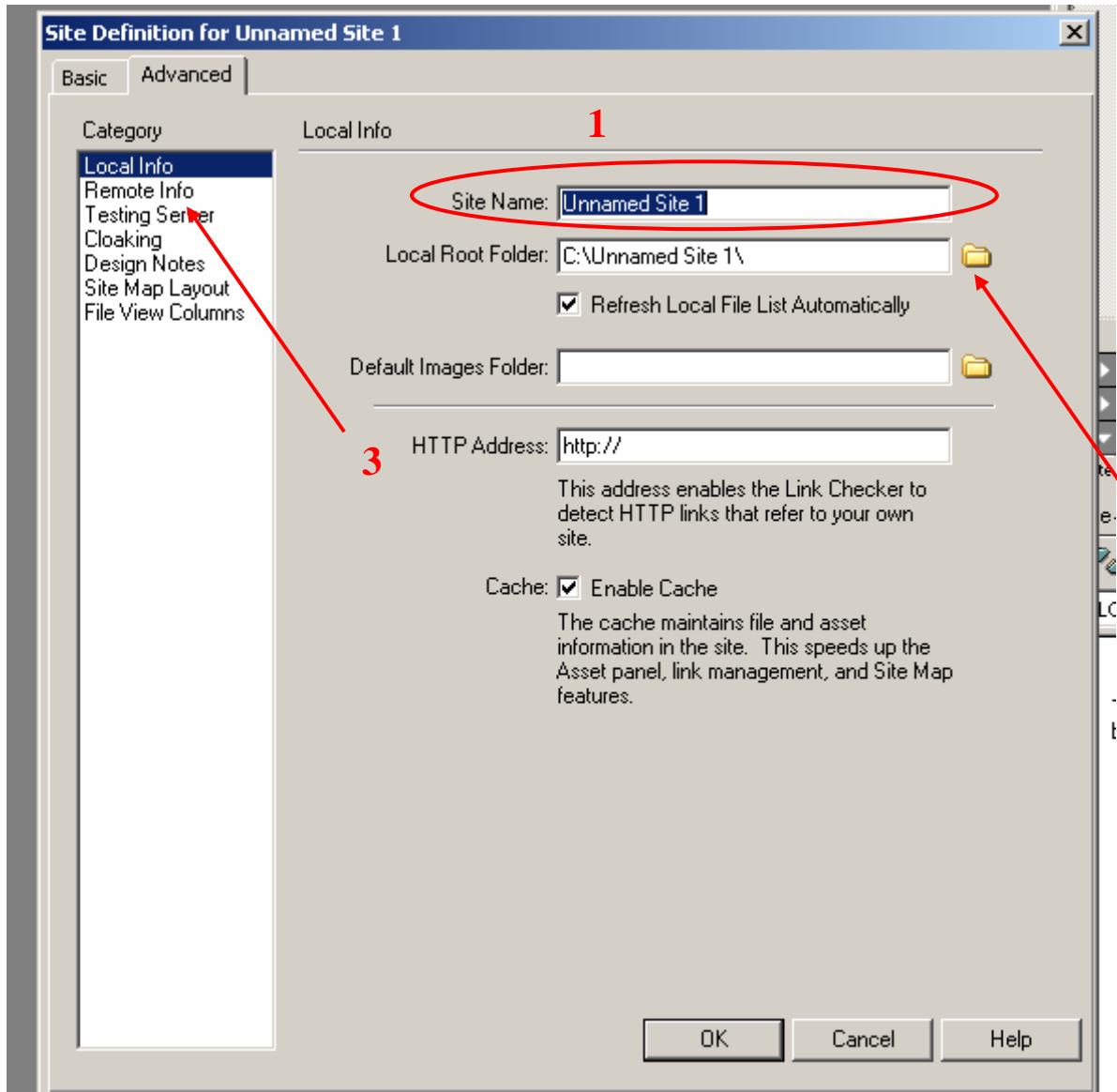
1. Start Macromedia Dreamweaver
2. Choose the drop down menu on the bottom right hand side of the screen as shown. Select Edit Sites... from the listing.



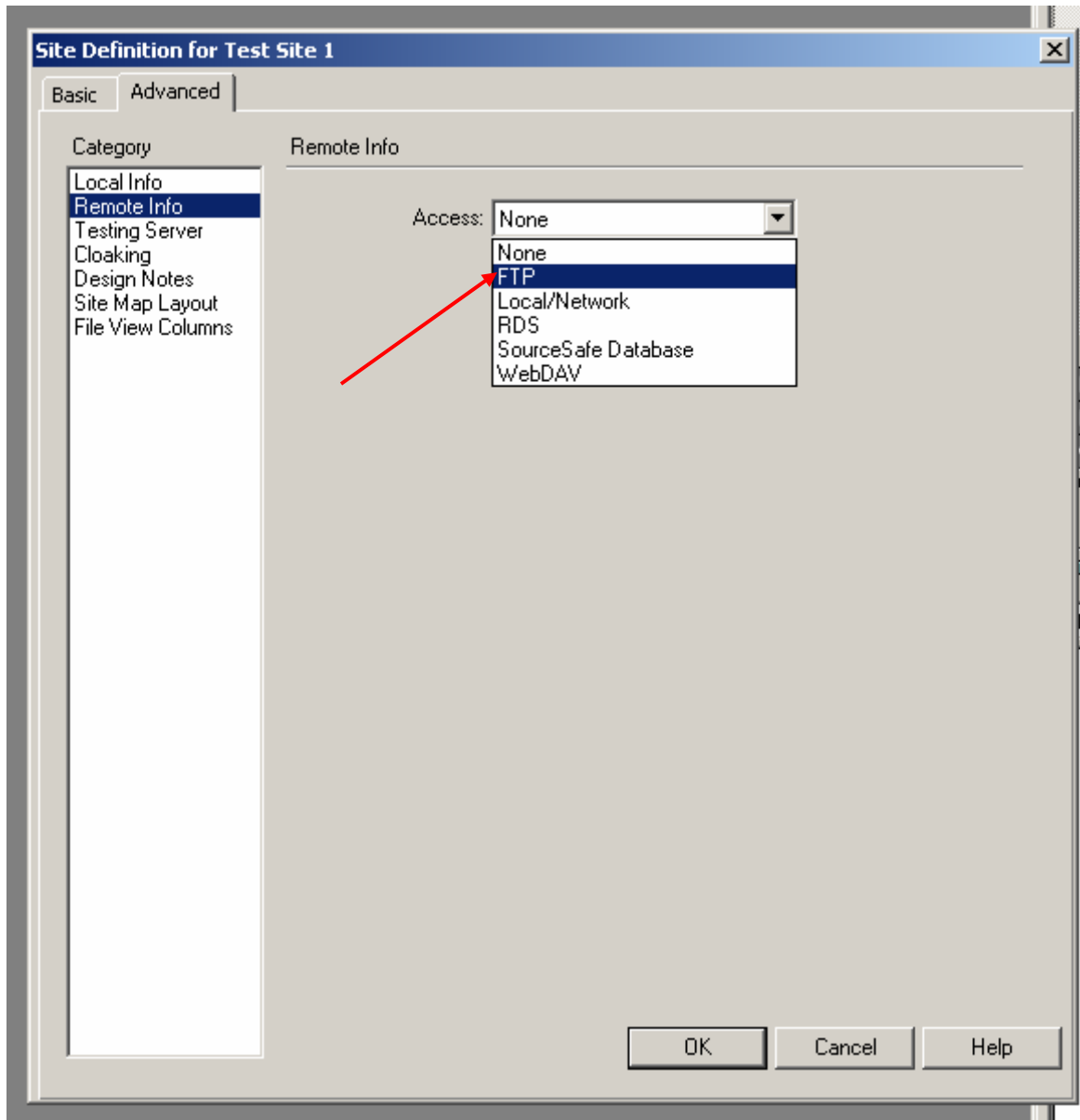
3. Choose "New..." from the menu on the right. If you already have a site that you have created in Dreamweaver it will be displayed on the left. In that case you will want to choose the "Edit..." option on the right.



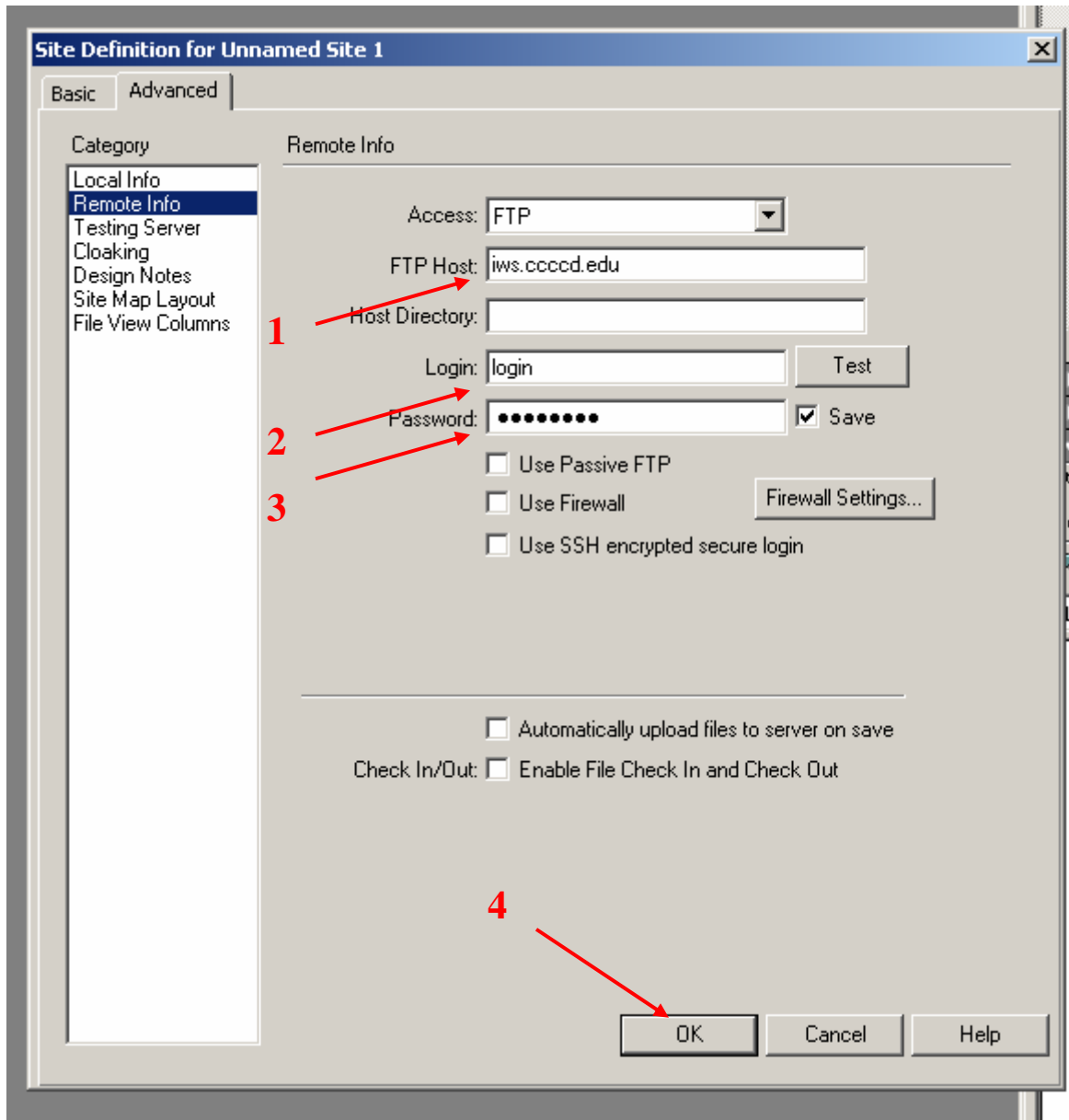
4. Fill in the name of the site you are creating. Then choose the folder on your local computer that you would like to have your website located by clicking on the folder icon on the right of the “Local Root Folder:” textbox. Next, click the “Remote Info” option on the left hand side.



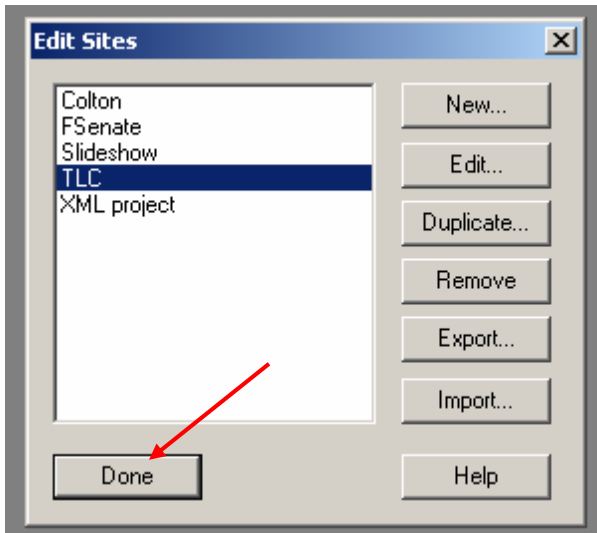
5. Choose the “FTP” option under the “Access:” drop down like shown.



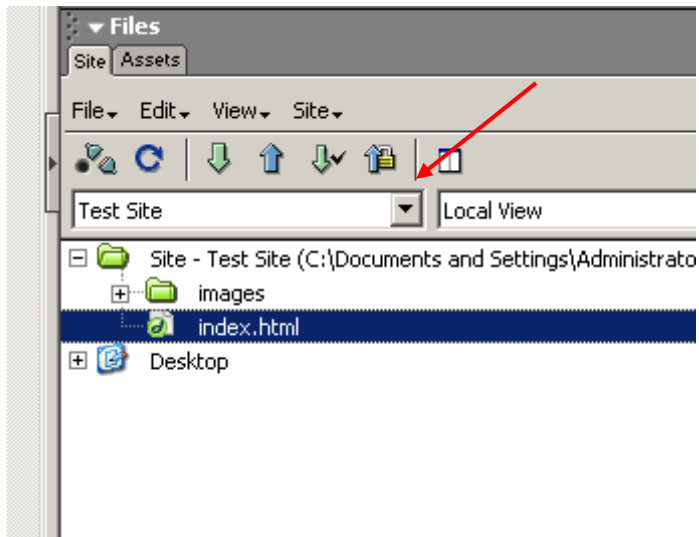
6. Fill in your FTP login information. You will need the name of the server that your website is located on (e.g. iws.ccccd.edu or iws2.ccccd.edu). Also, you will need to fill in your username (your first initial and last name) in the “Login” textbox in addition to your password (month and year of your birthday in mmyyyy format) in the “Password” textbox. Leave the other fields to their default values. Then press the “OK” button at the bottom.



7. Press the “Done” button.



8. You can now select your site from the left drop down on the bottom right hand side of the screen.



9. Once you have selected your site. You can make your changes in Dreamweaver to your local site.
 - a. Save the changes on your local computer by clicking the disk icon at the top of the screen.
 - b. Once you have saved the site locally, you can post your changes to the server by selecting the file or directory you would like to upload from the listing on the bottom right hand side of the screen.
 - c. Then click the blue up arrow as shown in the screen shot.

